

**Choose where you
make a difference.**

**Designate your KO Fund
Gift to an area that matters
most to you:**

 **Where needed most**

 **Arts**

 **Faculty enrichment**

 **Academic programs**

 **Athletics**

 **Financial aid**

**To make a gift online
please visit**

www.kingswoodoxford.org/giving



KINGSWOODOXFORD

Excellence. Involvement. Integrity.

170 Kingswood Road, West Hartford, CT 06119-1430
t 860.233.9631 | f 860.232.3843 | www.kingswoodoxford.org



2015-2016

KO FUND



Be INvolved

WHAT is the KO Fund?

Our School's KO Fund is the yearly campaign running from July 1-June 30 that supports the entire KO experience. These annual gifts help fund academic programs, the arts, athletics, financial aid and faculty enrichment. The KO Fund helps to support the 11% of the budget that tuition dollars do not cover.

WHY is the KO Fund important?

Each year we ask for support from all members of the KO community to contribute a voluntary gift that will help strengthen the School. These gifts come from our alums, current and past parents, grandparents, faculty, staff and the Board of Trustees. Without the support of the KO Fund, tuition rates would increase exponentially.

HOW does my participation make a difference?

Gifts large or small are extremely important to the KO Fund. The higher the participation, the more it shows our KO community, which includes our teachers, how much you value the School and the experiences it provides.

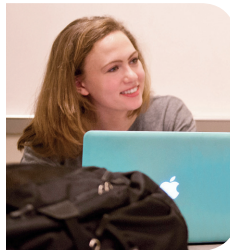


KO Fund FAQ

If I donate to the Parent Association, does that count towards the KO Fund, too? The KO Fund and the Parent Association are two separate entities that support different aspects of our school and community which means a gift to one, does not count as a gift to both.

If I buy an auction item at the KO Gala, have I donated to the KO Fund? Items purchased at the Gala are not considered as a donation to the KO Fund unless they are purchased for a higher amount than the value.

When I donate to the Faculty Appreciation Fund, does that count towards a donation to the KO Fund? That money is solely used to buy gifts for the faculty and staff and does not go into the KO Fund.



Are you interested in a gift of stock?

Merrill Lynch, DTC No. 5198, Acct. No. 6JA-02096
29 S. Main St., Suite 221, West Hartford, CT 06107

For more information, please contact either:

Nicole Falciano, of Merrill Lynch
860.561.7719 nicole_falciano@ml.com

Randy Stabile, of KO
860.727.5015 stabile.r@kingswoodoxford.org

WHAT can I do?

Get Involved by supporting the 2015-2016 KO Fund and join our families and alumni/ae in making a big impact this year! Gifts can be made online, by phone or by mail.

We also welcome matching gifts! To see what your company's matching gift policies are, head to www.kingswoodoxford.org/match.

WHERE can I give?

You can make an immediate impact online at www.kingswoodoxford.org/giving or by sending in a check payable to Kingswood Oxford School at 170 Kingswood Road, West Hartford, CT 06119.

For more information about getting involved or supporting the KO Fund, please contact either:

Meghan Kurtich,
Assistant Director of Annual Giving
860.727.5013 kurtich.m@kingswoodoxford.org

Cheyney Barrieau,
Assistant Director of Annual Giving
860.727.5012 barrieau.c@kingswoodoxford.org

THANK YOU for being such a big part of our KO Community!