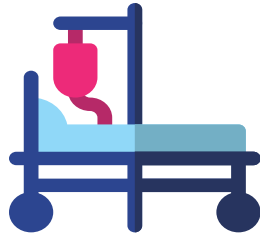


Salutation, you made a difference!

As a donor to Beth Israel Deaconess Hospital–Plymouth, you play an important role in the lives of our patients and their families. Look at what your gift has helped us accomplish so far this year.

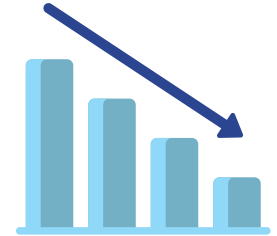
6

beds added
to the
BirthPlace



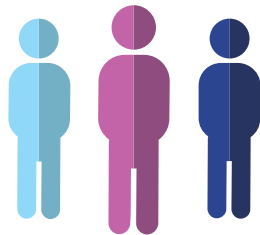
26%

decrease in fatal
overdoses in
Plymouth County



3,510

patients
served through
charitable care



90

families helped by
Fragile Footprints
Pediatric Palliative Program



**On behalf of our patients
and their families, THANK YOU
for your generosity.**

The BID–Plymouth Philanthropy Team,

*LiB Megan Krista
Edith Carol Karen*

**For more information about how gifts like yours are put
to work, visit bidplymouth-giving.org/thankyou**

Beth Israel Lahey Health 
Beth Israel Deaconess Hospital
Plymouth
275 Sandwich Street
Plymouth, MA 02360